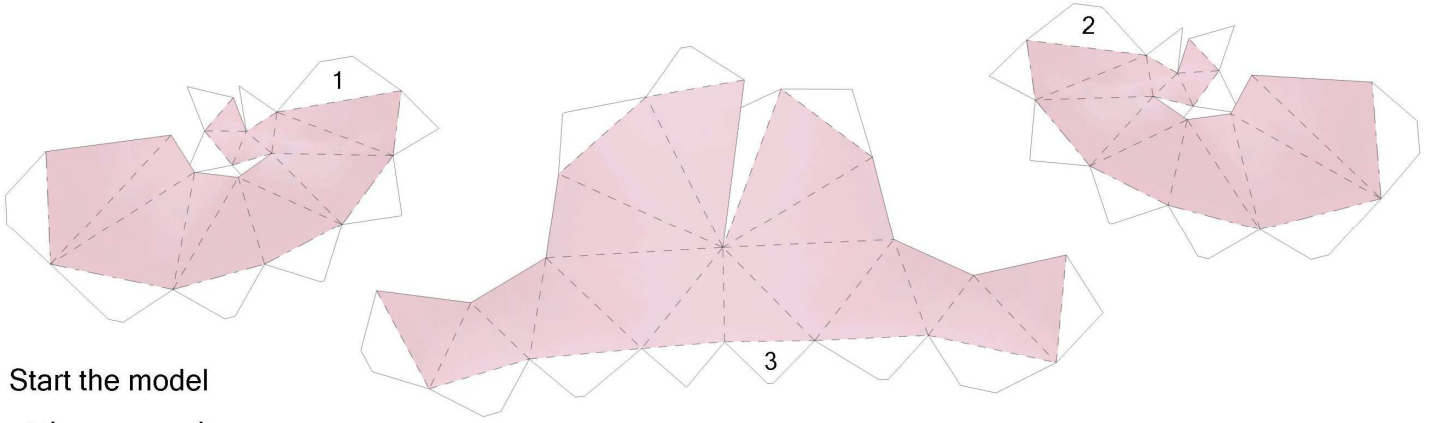




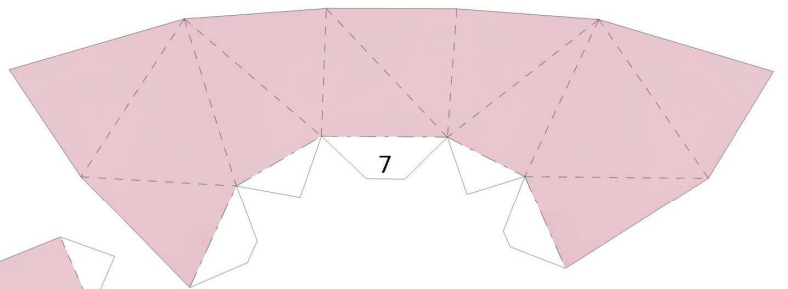
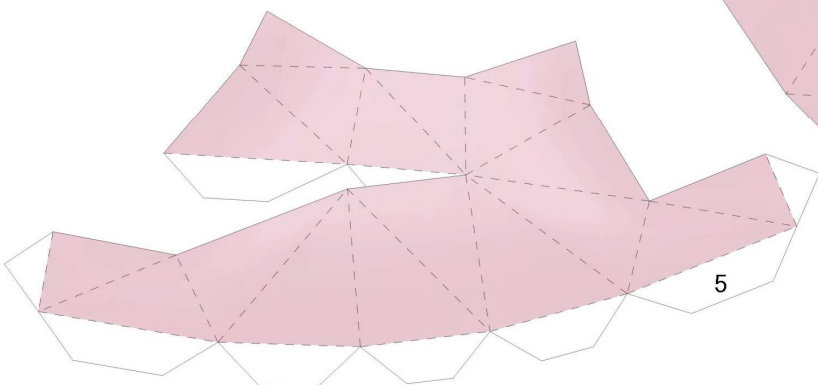
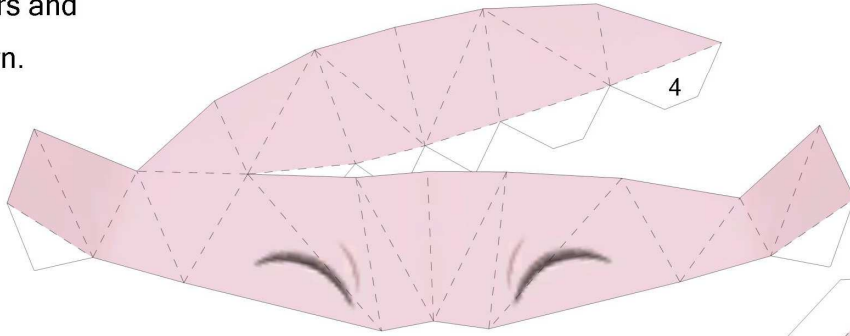
Mew V2

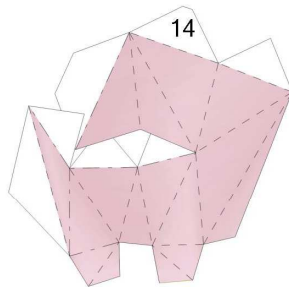
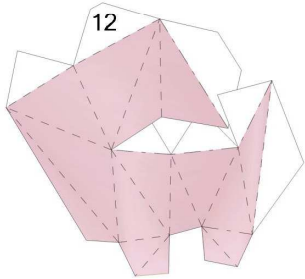
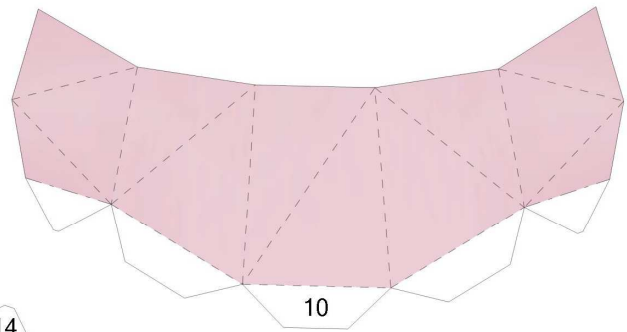
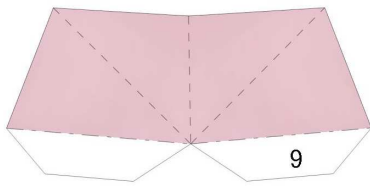
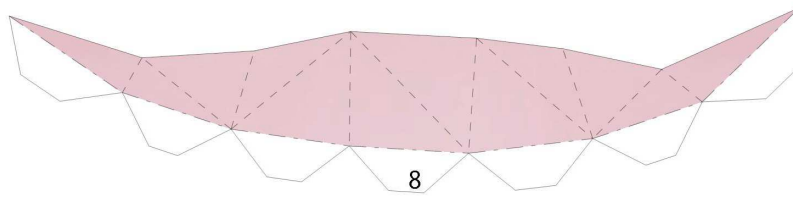
By Luis and POdragon

PaperPokés
www.pokemonpapercraft.net

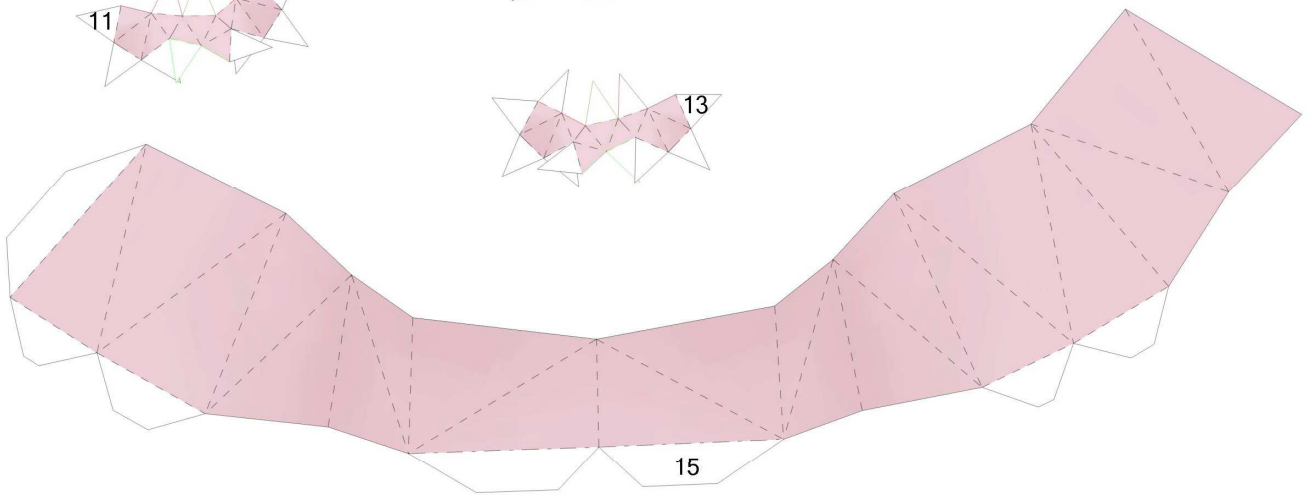
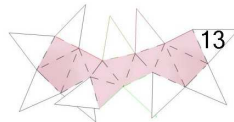


Start the model
at the ears and
buid down.

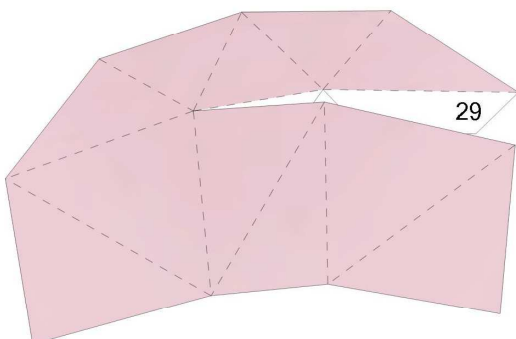
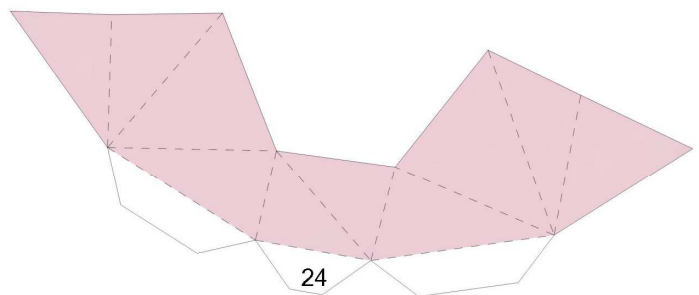




The fingers are small, so take your time there. Also, the use of tweezers is indicated. Colored tabs included for reference.

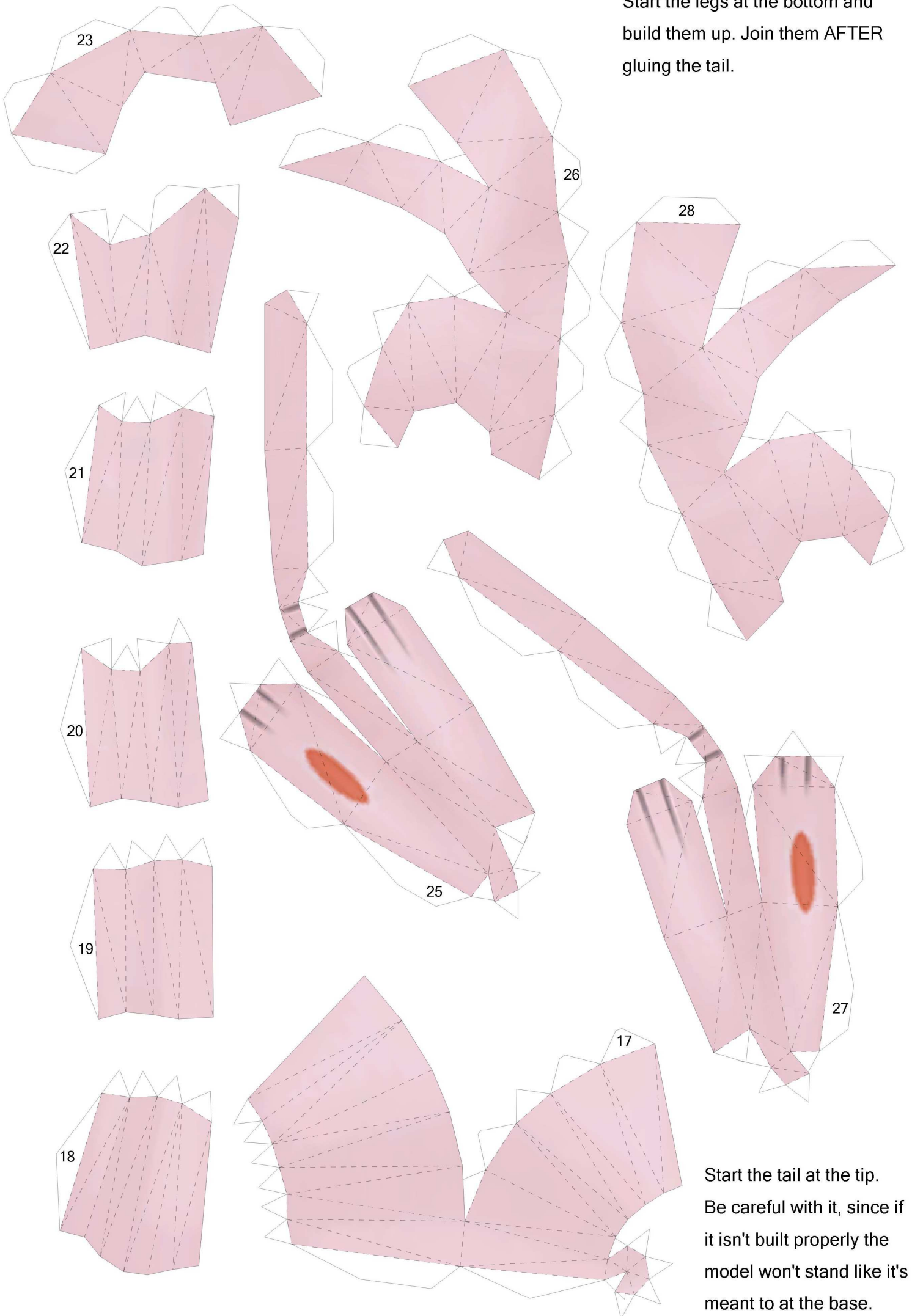


Join the tail and piece 24 TOGETHER to the body.



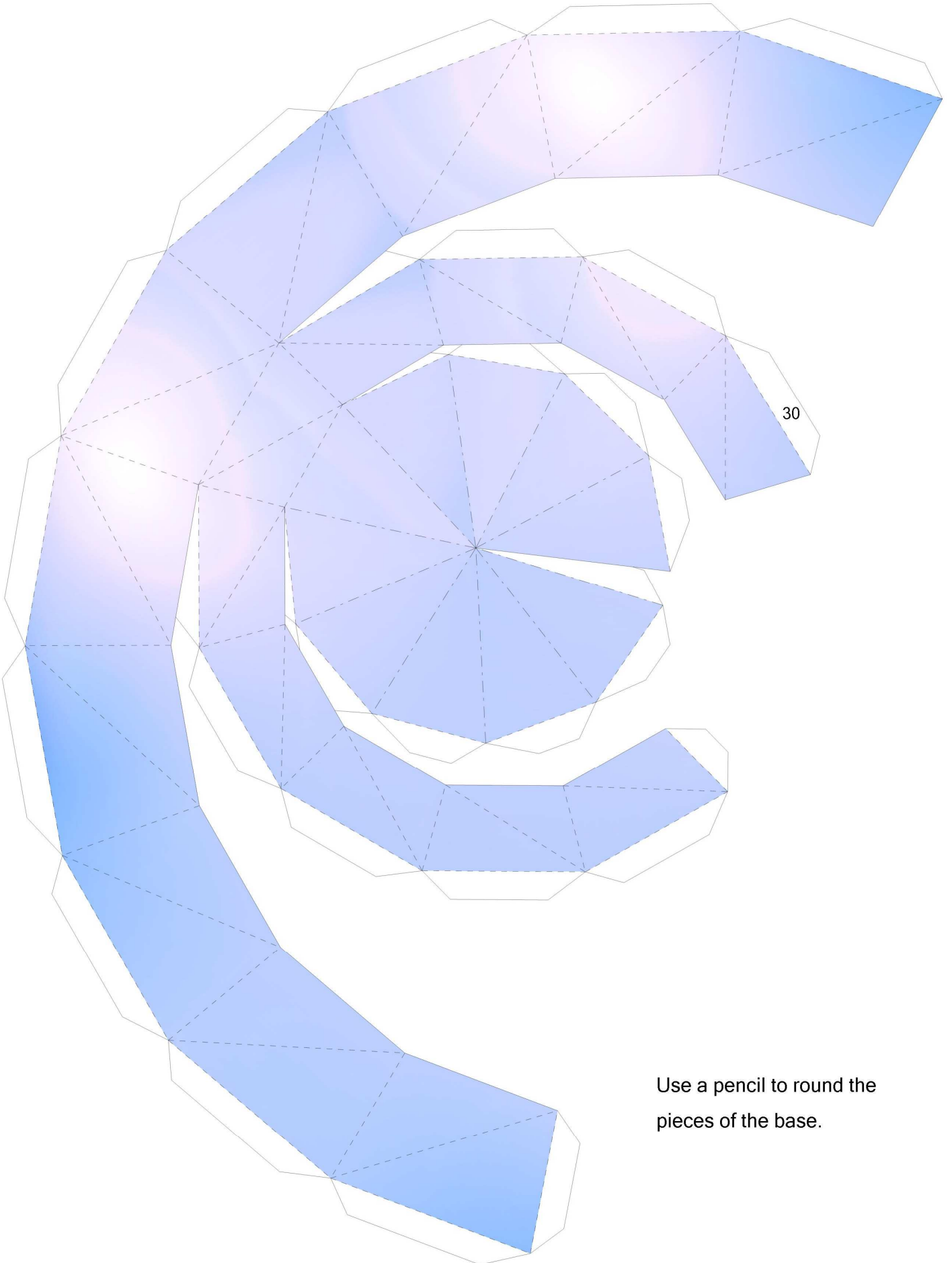
< Close here

Start the legs at the bottom and build them up. Join them AFTER gluing the tail.



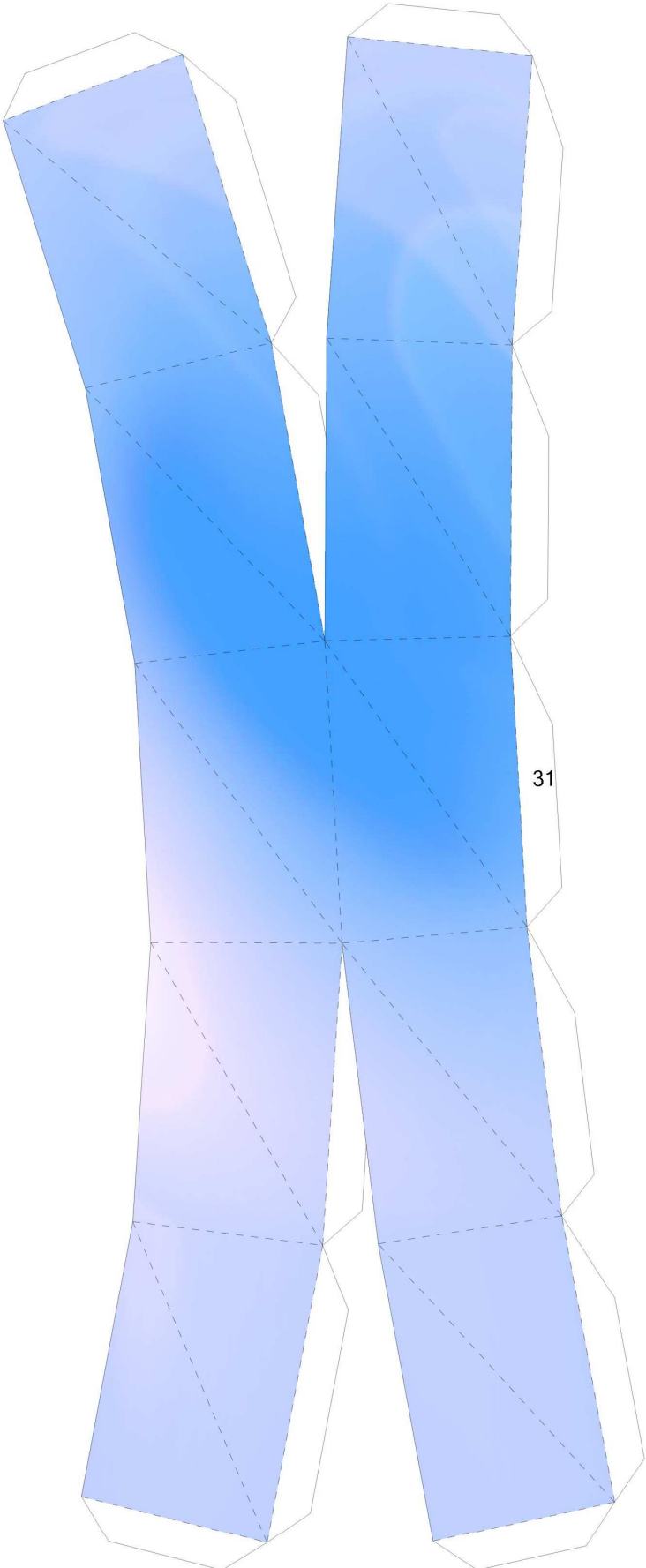
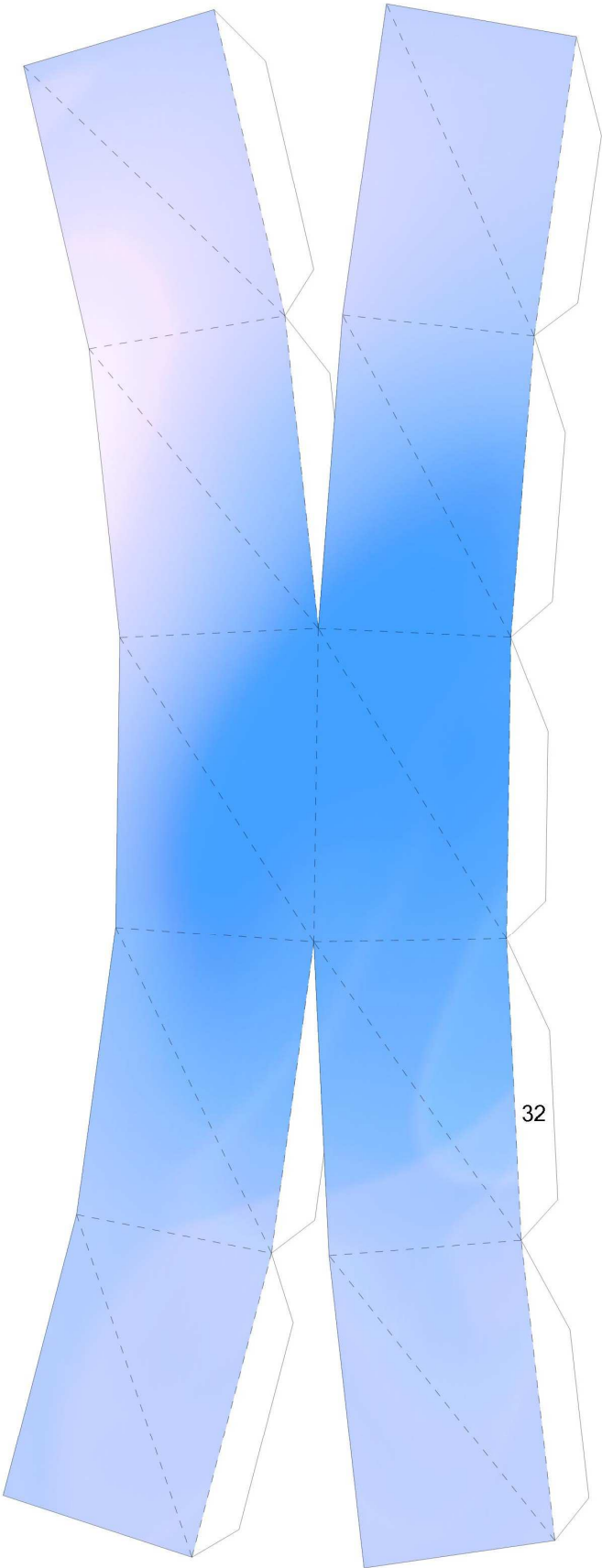
Start the tail at the tip. Be careful with it, since if it isn't built properly the model won't stand like it's meant to at the base.

Base top



Use a pencil to round the pieces of the base.

Base sides.



This page can be printed in black and white

